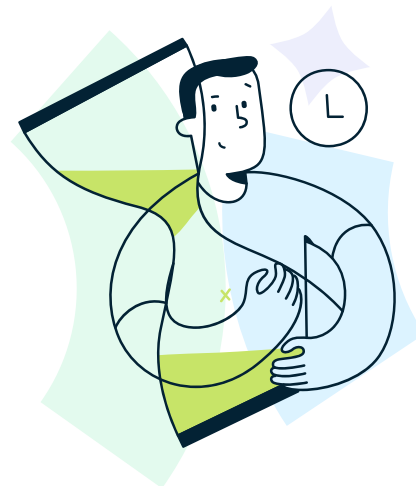


Time Tracking

Manage time like clockwork.

Replace manual systems and automate employee time and attendance tracking.

Fingercheck Time Tracking eliminates manual time entry and delivers insights into hours worked, hours budgeted and everything in between.



Key benefits of Time Tracking

Employee-friendly app

Offer your employees a simple, mobile solution for clocking in and out.

Real-time reporting

Our comprehensive dashboard helps you evaluate your real-time attendance and overtime reports.

Seamless payroll integration

Automatically sync employee time tracking data with your payroll system and avoid costly mistakes on pay day.

Live status dashboard

Admins and supervisors control automated alerts, emails and push notifications about time cards and exceptions.

What's included?

Time Tracking

- Multiple clock-in methods
- Ability for manual and automated time entry
- Real-time status with GEO fencing and job fencing
- Wage and labor rules
- Automatic break policies
- Multi-level timesheet approvals
- Job costing

Time Tracking **ADVANCED**

Time Tracking, Advanced is available with the upgrade to Fingercheck 360 and Fingercheck 360 Plus. It includes the standard features and:

- Create custom time-off accrual policies and time-off management
- Use ready-made templates for state-specific sick policies or build your own
- Alerts for missed punches and PTO requests
- View available time accrual balances
- Automated reports Overtime, holiday pay and compliance rules
- Shift differential policies
- Time entry with custom calculation rules

Visit Fingercheck to learn more. [➔](#)